

# CITIZENS PROPERTY INSURANCE CORPORATION

## Estimated Rate Need - Fall 2010

(PLA and HRA combined)

Business Type	Total Inforce Premium	Statewide Indicated Rate Level Change
Homeowners	\$950,012,405	55.9%
Dwelling (excluding mobile homes)	\$323,607,402	54.8%
Condo Unit Owners	\$72,737,408	20.0%

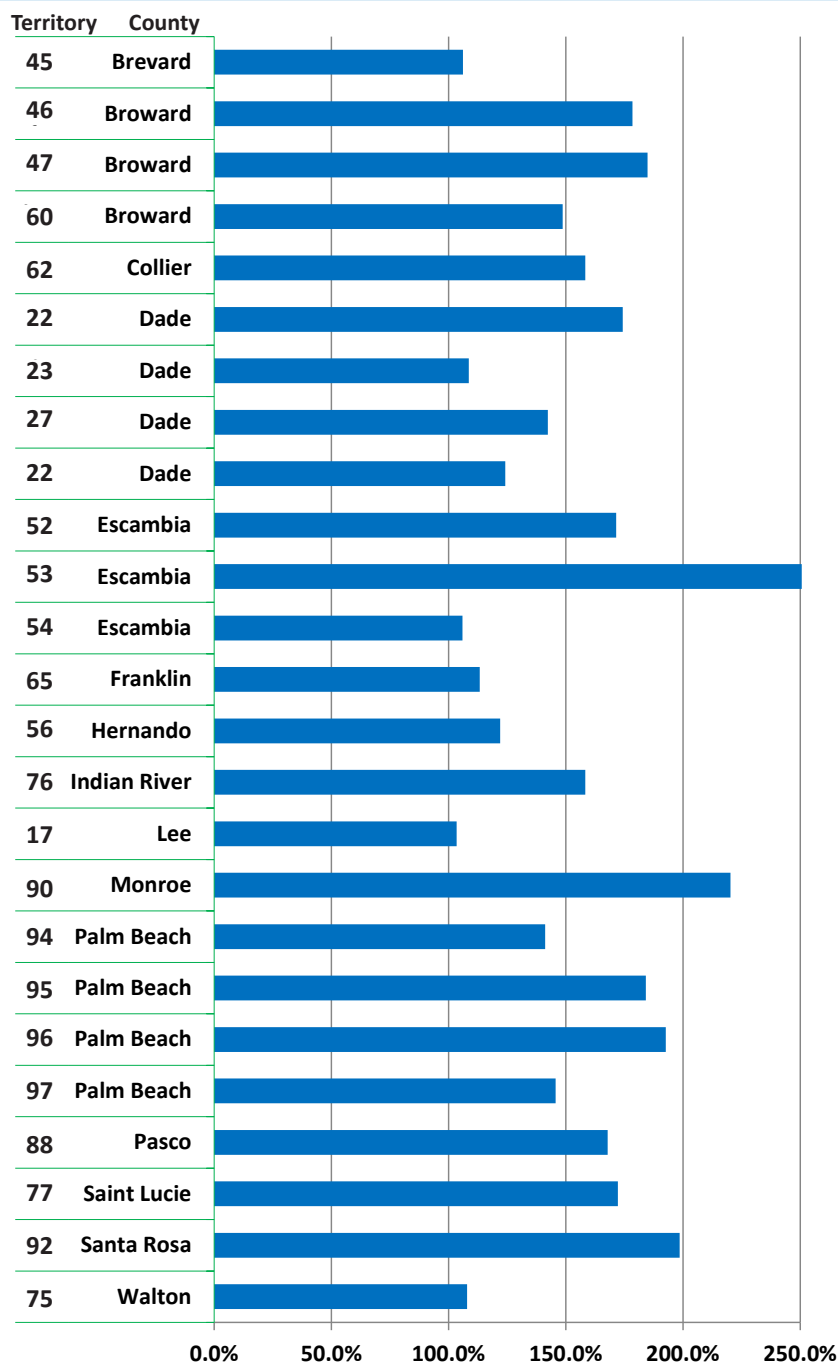
Source: Citizens Rate Filing

## Implied Rate Subsidy - Spring 2011

Business Type	Implied Subsidy Amount	Premium In-force Percentage
Homeowners	\$434,158,844	45.7%
Dwelling (excluding mobile homes)	\$146,083,894	45.1%
Condo Unit Owners	\$12,926,691	17.8%

Source: Rollins Analytics, Inc.

## Indicated Homeowners Rate Change Over 100% Wind Territories - Fall 2010



Source: Citizens' Rate Filing - Fall 2010

**Citizens Implied Rate Inadequacy Under Current Glide Path - Homeowners**  
Based on Citizens Rate Filings - Fall 2010

## Sinkhole Alley

County	Premium In-force (Fall 2010)	Indicated Rate Level Change (Spring 2011)	Implied Subsidy Under Current Glide Path
Hernando	\$23,617,666	159.9%	\$37,772,462
Hillsborough	\$21,922,562	22.1%	\$4,841,231
Pasco	\$51,276,329	22.7%	\$11,630,886
Pinellas	\$85,544,390	21.0%	\$17,975,988
<b>Total Sinkhole Alley</b>	<b>\$182,360,947</b>	<b>39.6%</b>	<b>\$72,220,567</b>

## Southwest Florida

County	Premium In-force (Fall 2010)	Indicated Rate Level Change (Spring 2011)	Implied Subsidy Under Current Glide Path
Charlotte	\$9,106,979	9.9%	\$898,808
Collier	\$15,086,609	60.0%	\$9,061,410
Lee	\$28,300,084	38.0%	\$10,741,078
<b>Total Southwest FL</b>	<b>\$52,493,672</b>	<b>39.4%</b>	<b>\$20,701,295</b>

## South Florida

County	Premium In-force (Fall 2010)	Indicated Rate Level Change (Spring 2011)	Implied Subsidy Under Current Glide Path
Monroe	\$35,292,944	174.8%	\$61,706,914

## Tri-county

County	Premium In-force (Fall 2010)	Indicated Rate Level Change (Spring 2011)	Implied Subsidy Under Current Glide Path
Dade	\$287,615,128	42.8%	\$123,170,588
Broward	\$153,320,396	40.8%	\$62,497,216
Palm Beach	\$108,824,826	52.9%	\$57,612,317
<b>Total Tri-county</b>	<b>\$549,760,350</b>	<b>44.3%</b>	<b>\$243,280,121</b>